



Version 1.30
Release Notes – 03/30/2018

Table of Contents

New Features	3
Enhancements.....	4
Bug Fixes	7
Contact Uila Support	7
About Uila	8

Note: Once upgraded to Uila version 1.30, we recommend the user to delete the Uila cookie from the browser.

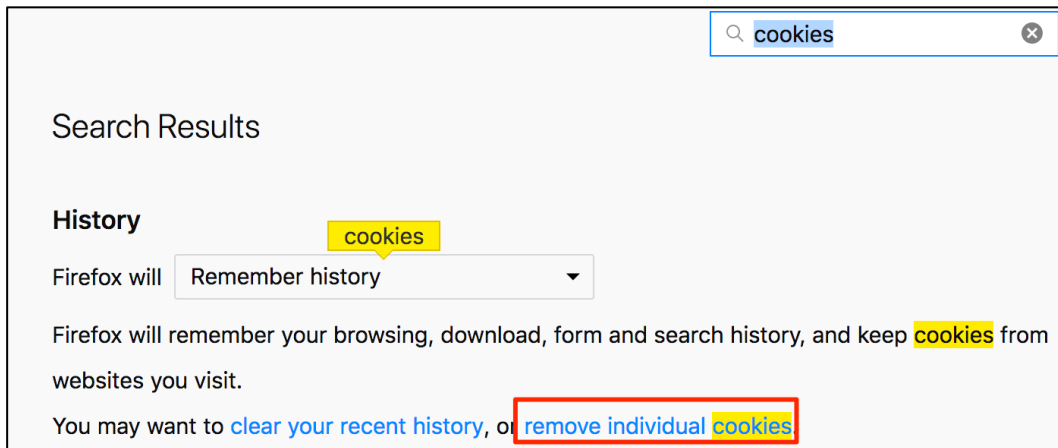
In Google Chrome:

- 1) Go to chrome://settings/siteData
- 2) Search for Uila and delete the cookie

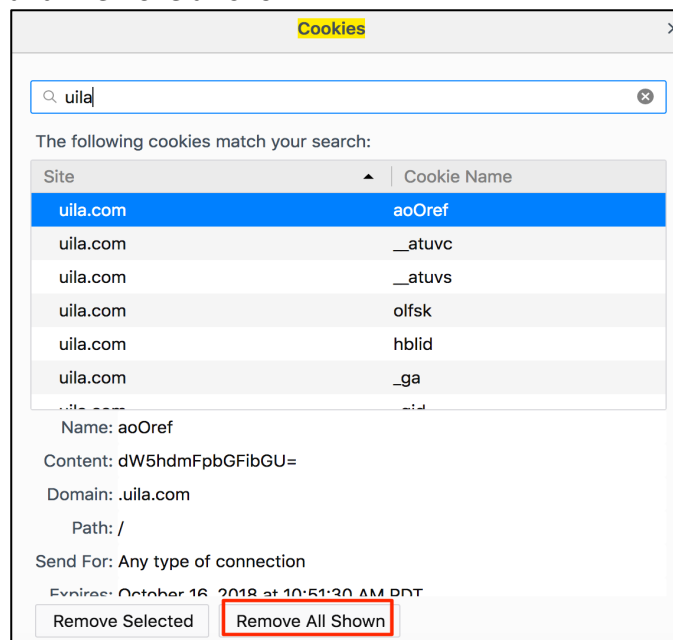


In Firefox:

- 1) Under preferences – search for cookies.
- 2) Click on “Remove Individual Cookies”



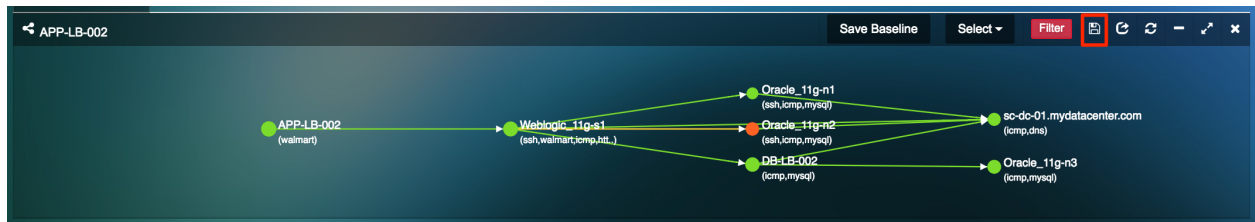
- 3) Search for “Uila” and “Remove all shown”.



New Features

- Application Dependency Map and server topology map export** – Uila now allows users to export the Application Dependency Map and Server Topology Map into an Excel spreadsheet. A common use case for this export is it can be used for datacenter pre-migration assessments to the Hybrid Cloud.

You can export the ADM by clicking on the “Save to CSV” button.



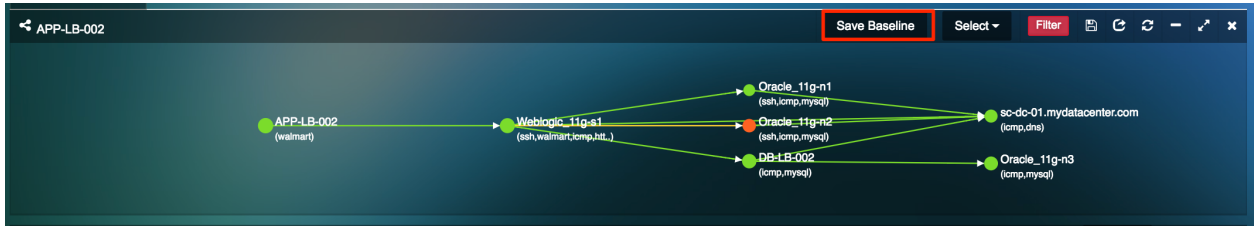
The CSV export provides the user with an excel sheet to help identify the various inter-dependencies and the capacity of individual virtual machines.

Source	Source IP	Through Gateway	Destination	Destination IP	Port	Application
APP-LB-002	192.168.0.91	Gateway [192.168.0.1]	145.239.118.233	145.239.118.233	123	ntp
APP-LB-002	192.168.0.91		sc-dc-01.mydatacenter.com	192.168.0.20	53	dns
APP-LB-002	192.168.0.91		Weblogic_11g-s1	192.168.0.27	80	mysql
Weblogic_11g-s1	192.168.0.27		DB-LB-002	192.168.0.90	3306	mysql
Weblogic_11g-s1	192.168.0.27		sc-dc-01.mydatacenter.com	192.168.0.20	53	dns
Weblogic_11g-s1	192.168.0.27		MySQL-N1	192.168.0.88	22	tcp
sc-dc-01.mydatacenter.com	192.168.0.20		FFFFFFFFFFFF	192.168.1.255	138	smb
DB-LB-002	192.168.0.90		Oracle_11g-n3	192.168.0.36	3306	mysql
DB-LB-002	192.168.0.90		sc-dc-01.mydatacenter.com	192.168.0.20	53	dns
DB-LB-002	192.168.0.90	Gateway [192.168.0.1]	145.239.118.233	145.239.118.233	123	ntp

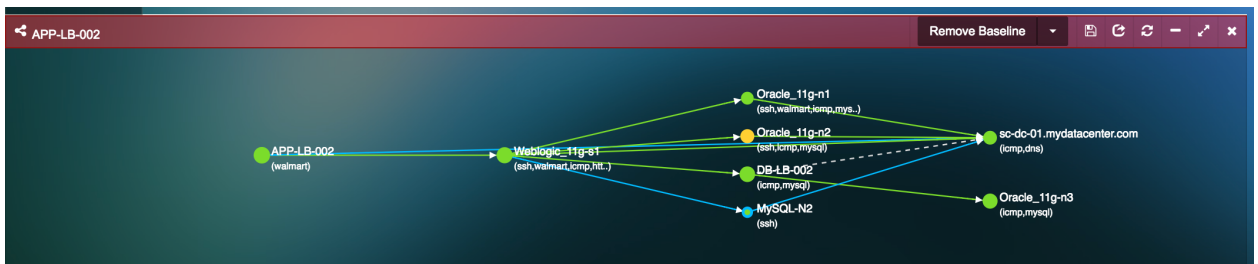
Server	Server IP	Number of CPU Core	CPU(GHz)	Memory(GB)	Application
APP-LB-002	192.168.0.91	1	1.81	0.25	[mysql]
Weblogic_11g-s1	192.168.0.27	2	1.81	0.5	[ssh][mysql][icmp][http]
sc-dc-01.mydatacenter.com	192.168.0.20				[icmp][dns]
DB-LB-002	192.168.0.90	1	1.81	0.5	[icmp][mysql]
Oracle_11g-n3		4	1.81	2.96	[icmp][mysql]

- Application Dependency Change Monitoring**– Uila now allows users to baseline their Application Dependency Maps and comparing it to any given time period. With this change monitoring capability, users can now be on top of all changes in the applications, servers delivering those applications and the interdependencies in the environment, including new entrants and exits.

You can set the baseline by clicking on the “Save Baseline” button.



When the user moves the time slider to another timeframe, Uila will now report all the changes in connection.



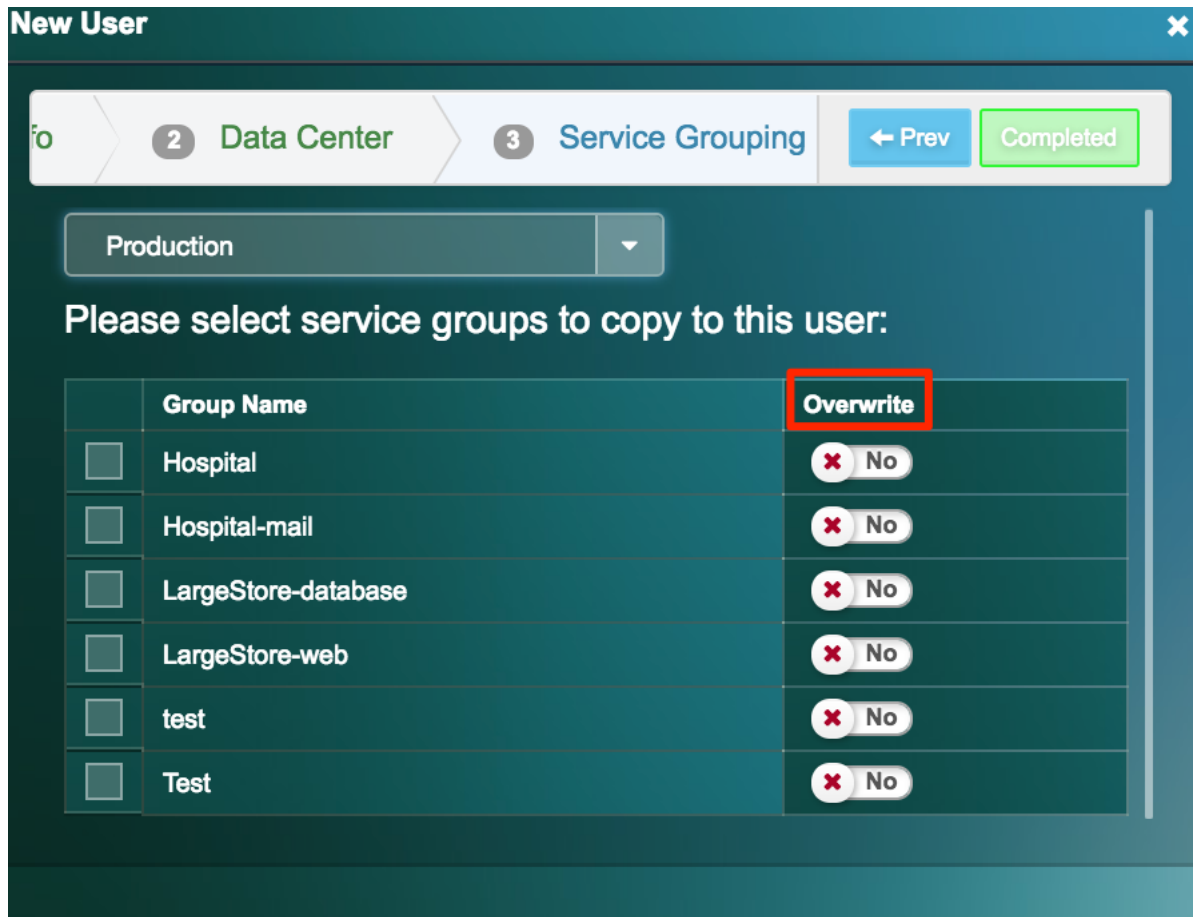
- 1) **Dotted gray line** – The dotted gray line seen on the map indicates all the missing inter-connections in comparison to the baseline.
- 2) **Blue Line** – The solid blue line indicates any new dependencies and inter-connections between the individual VM's.

Enhancements

- **New user roles and privileges** - A new datacenter administrator role has been created. Here is the comparison between the different user roles and their privileges.
 - **Uila administrator**
 - **Data Center administrator**
 - **Standard User**

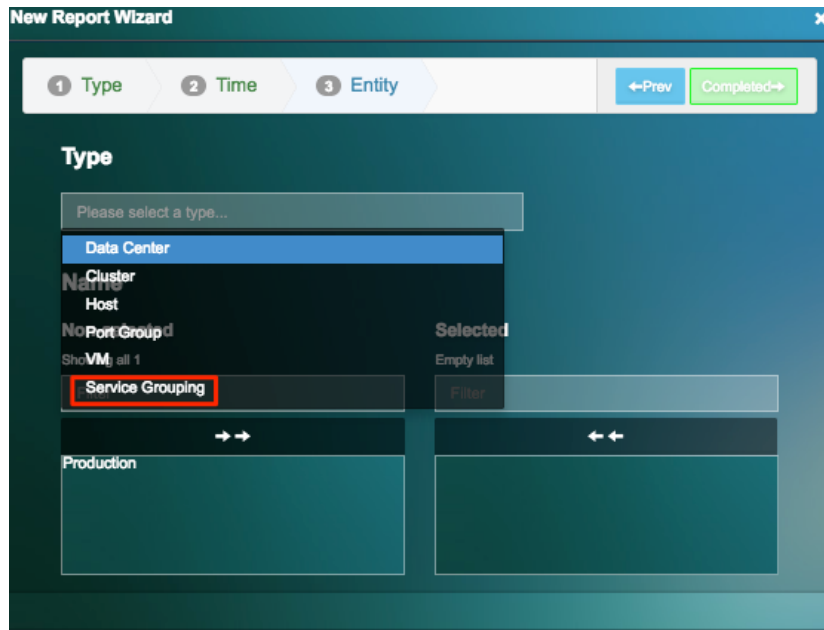
User role	Uila admin	Datacenter admin	Standard User
Number of accounts	Only 1	More than 1	More than 1
Packet Capture	Yes, for all datacenters	Yes, for assigned datacenters	No
vST configuration	Yes, for all datacenters	Yes, for assigned datacenters	No
Alarm Configuration	Yes, for all datacenters	Yes, for assigned datacenters	No
VIC Configuration	Yes, for all datacenters	Yes, for assigned datacenters	No
Server Monitoring	Yes, for all datacenters	Yes, for assigned datacenters	No
Software Update	Yes, for all datacenters	No	No
User Experience	Yes, for all datacenters	Yes, for assigned datacenters	No
Account Management	Yes, for all datacenters	No	No
Global Configuration	Yes, for all datacenters	Yes, for assigned datacenters	No

- Uila administrator can now assign service groups to Standard Users** –Uila administrator can assign pre-built service groups with mission critical servers and applications to a non-administrator user. This would allow a standard user to focus on their relevant multi-tiered applications without having to look at the datacenter as a whole.

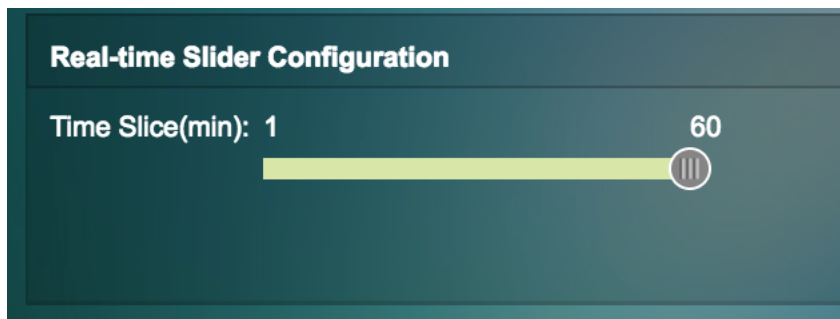


- Service group reports** – Uila now allows users to generate customized reports based on individual service groups. This would enable them to generate specific reports for mission critical servers and applications within their environment.

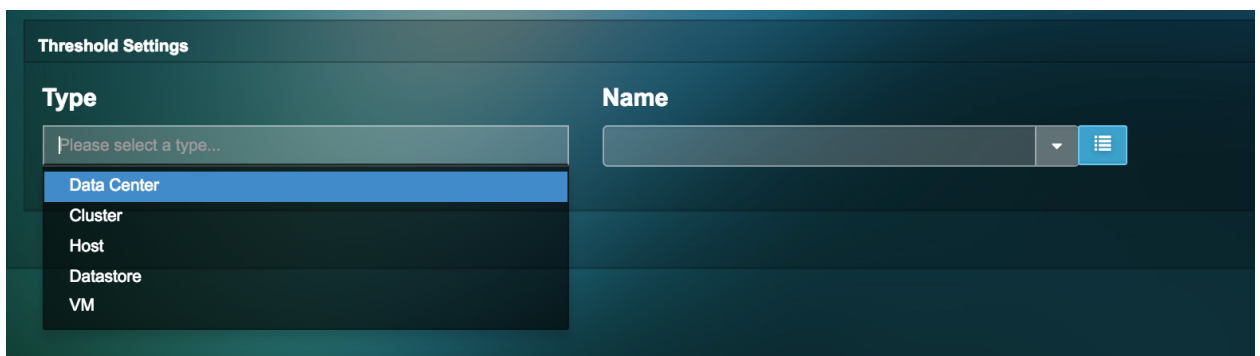
While generating a new report, users will now notice a separate “Service Grouping” entry and can generate reports on individual service groups.



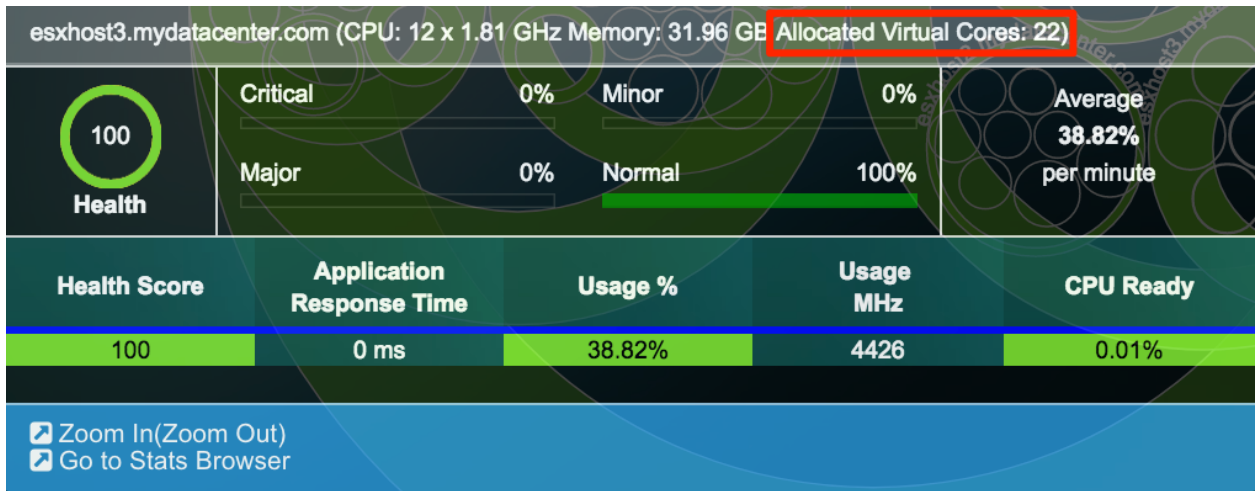
- **Real-Time slider configuration**– Uila now allows the user to configure the default time slice option for the slider time span interval. This can be set between 1 min to 60 mins and can be found under preferences.



- **Allow users to define thresholds for datacenter, cluster, hosts and datastore** – The threshold settings can be found under Settings -> Alarm Configuration.



- **Report allocated virtual CPU cores on host CPU circles** – This can be used to calculate the ratio of pCPU vs vCPU to help understand overcommitted or under committed VMs in the environment.



Bug Fixes

- Allow non-admin users to generate reports
- Add the link of “Add to server group” on VM tooltip across various pages.
- Use tooltips to show the full content in transaction request and reply

Contact Uila Support

Uila software solutions are designed with ease of installation and simplified maintenance in mind. The Uila team is dedicated to exceeding your expectations, and knows that any downtime is too much in today's competitive world. Our goal is to keep your applications running 24 X 7. We offer a simple and effective support program to meet your needs. Customers who purchased Uila products and under support contract will receive the following benefits:

- Unlimited support via email or phone call
- Free software minor release update
- Free software major release upgrade

Email: support@uila.com

Phone: (408) 819-0775



About Uila

Uila with its Application-Centric Infrastructure Monitoring and Analytics identifies performance bottlenecks for business-critical services & plans Workload Migration strategies for Private & Hybrid Cloud environments. Uila provides service dependency mapping, full stack correlation with 1-click root cause analysis and patented deep packet inspection technology that understands over 3,000 application protocols for transactional meta data analysis. Businesses use Uila to align themselves with their IT Operations team and cut time to resolution from days to minutes, keep their application at peak performance at all time and ensure end-user satisfaction to the fullest.